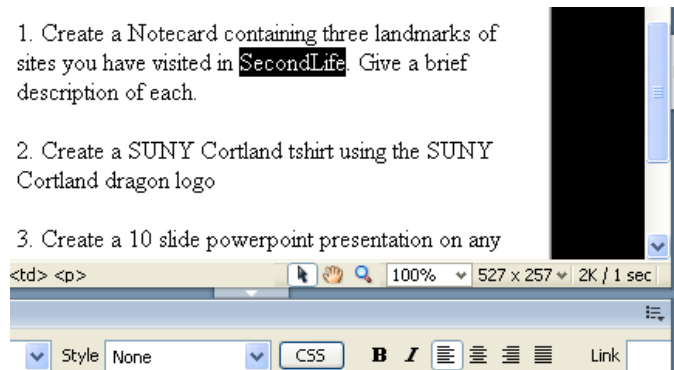


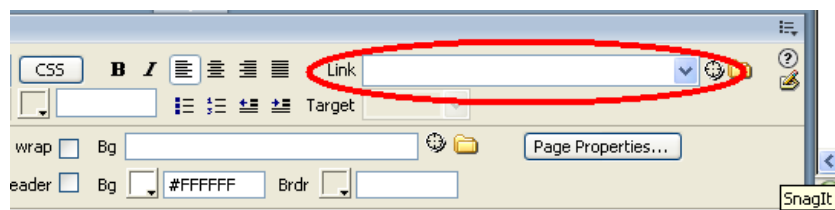
There are two types of links, internal and external, also known as relative and absolute. An internal, or relative link, refers to a file (.htm, .html, .jpg, etc) that is within the confines of your webpage directory. In other words, you are connecting one file within your website to another. The link structure will look something like 'images/buildings/corey.jpg' or 'contactus.html'. The file path is 'relative' to its location within the folder (directory) that contains all your website files

An external, or absolute link, is a link to a file or webpage that is independent of your own. For example, <http://www.cnn.com> or <http://library.cortland.edu/images/library5.jpg> are both external links. |

To create a link in Dreamweaver, click and drag across the text that will serve as the hyperlink (Or click on an image to select it).



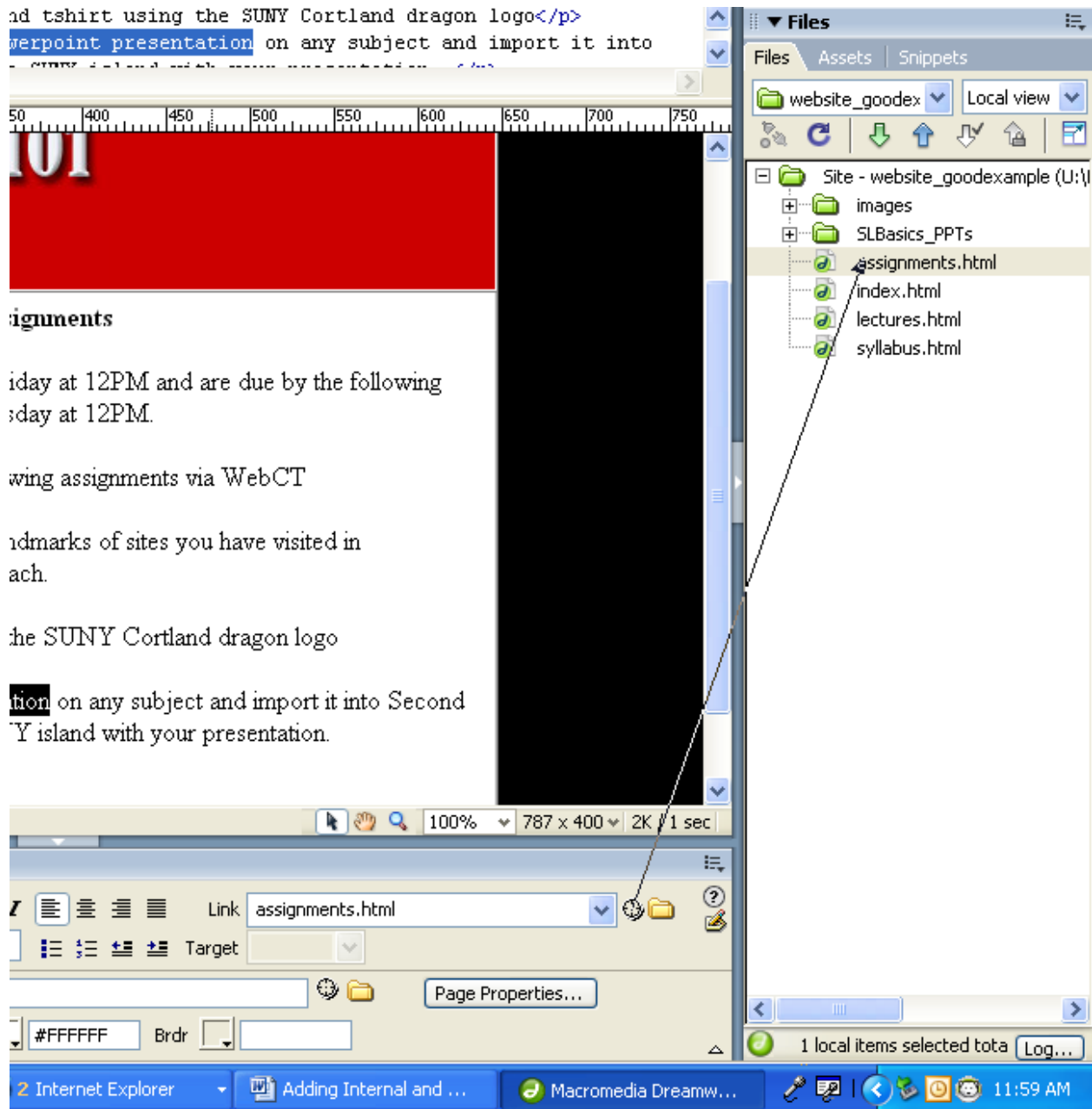
Notice that the Properties Bar changes. You will enter your link (internal or external) in the 'link' field on the properties bar.



If you are creating a link to an external file, just type in the address.



For an internal link, use the 'point to file' target. Do this by clicking and dragging the target to the file **Tera Doty-Blance**



The other method to create an internal link is to click on the yellow folder icon next to the link field and browse to the file within your website directory.

